

Organic Black Treacle

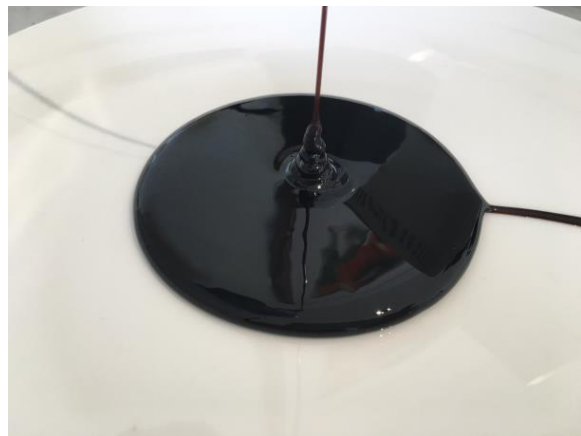
(Product from biologically controlled cultivations)

Product No.: DMH – P4

Product description:

Organic black treacle is a dark syrup, which is generated during the production process of organic cane sugar from organic sugar cane. Organic black treacle is used in the food industry, mostly in the baking industry or in the chocolate production.

Parameter	Value	Measuring Unit
Brix	Ca. 80	%
Invert Sugar	16 – 28	%
Sucrose	39 – 46	%
Total Sugars	min. 60	%
Ash	max. 11	%
PH	5 – 6	



The exact composition of organic treacle depends on the composition of the processed sugarcane and is subject to natural variations.

Packaging: in bulk in trucks, IBCs (each ca. 800 KG/1.350 KG) or in drums (each ca. 160 KG)

Certificates: EU-Bio, NOP, Naturland, Kosher

Liability

The information contained herein is based on technical data that DMH Deutsche Melasse Handelsgesellschaft mbH (later on called DMH) believes to be reliable and accurate, but disclaims any warrant or guarantee, express or implied. DMH reserves the right to change information contained herein without prior notice. Any information included herein taken solely or as a whole, does not suggest in any way the product is of satisfactory quality or is adequate for a particular purpose. The purchasing party is not released from the burden of carrying out his own tests and experiments. Because conditions of use of this product are outside our control, DMH excludes any legal or other liability for the use of this information or any part of it, whether or not based on DMHs negligence, and therefore DMH shall not be liable for any damages (special, direct, indirect, consequential damages) relating to the use of this information or the use of the product referred herein, solely or in combination with other products. Consequently all liability on the part of DMH is excluded.

Furthermore, our sales and delivery conditions will apply accordingly.

DMH Deutsche Melasse Handelsgesellschaft mbH

Esplanade 29-30

D-20354 Hamburg

Germany

Tel +49-40-3003937-23

Fax +49-40-300393729

Mail abwicklung@deutsche-melasse.de

Web www.deutsche-melasse.de